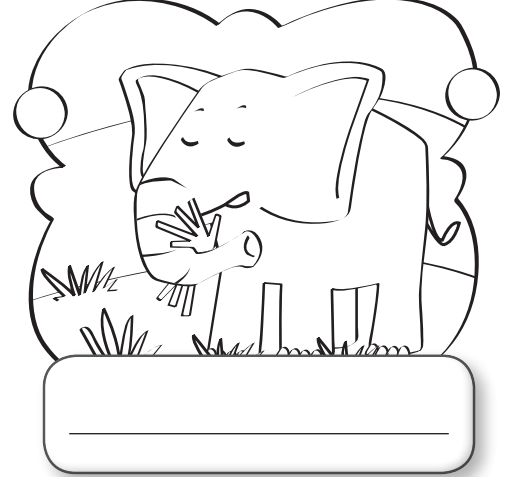


1 Look and label the animals.

giraffe lion hippo monkey zebra elephant



◆ Look and match.

1. The monkey
2. The lion
3. The zebra
4. The elephant
5. The giraffe
6. The hippo

- is drinking water.
- is sleeping.
- is eating grass.
- is swimming.
- is climbing a rock.
- is running.

2 Write the numbers.

seven 7

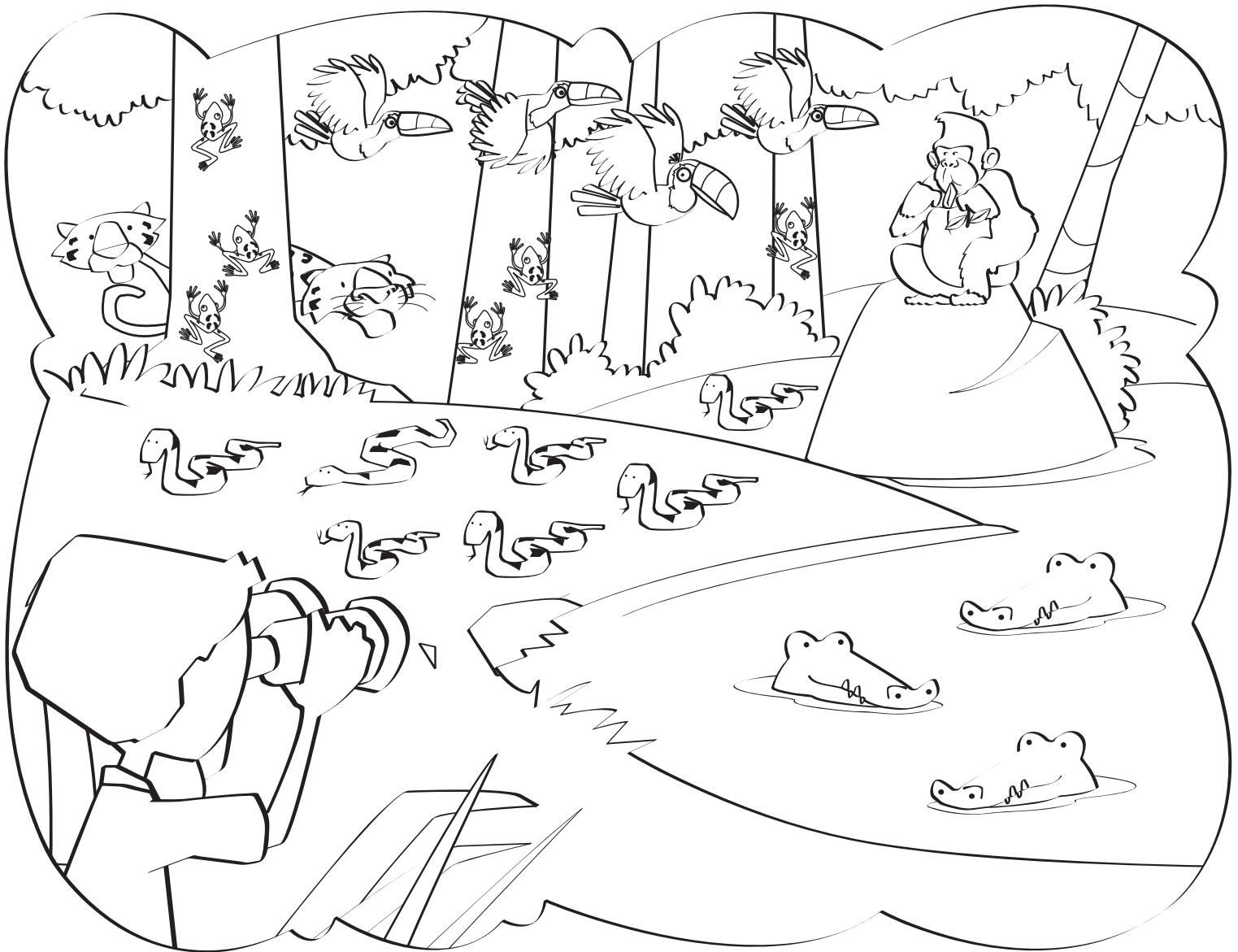
three _____

eight _____

two _____

five _____

3 Write and count the animal.



How many...?

1. It's got four legs. Its green or red or lots of colours.

a frog

six

2. It's green and it's got big teeth and a tail.

3. Its fur is black, yellow and brown. It's got four legs.

4. Its fur is black and grey. It's got two arms.



can for ability



A gorilla **can** run.



A toucan **can** fly.

1 Unscramble and mark (✓).

1. animal / swim / Which / can / ?

_____ a toucan a hippo

2. fly / can / animal / Which / ?

_____ a lion a toucan

2 Say aloud and circle.

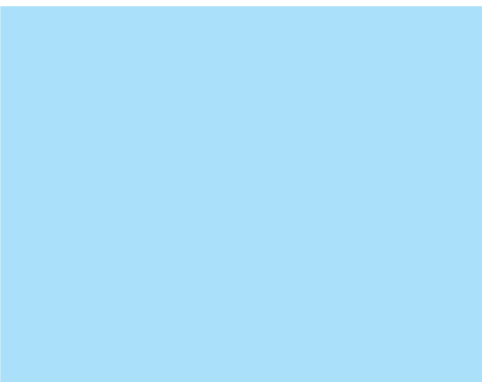
1. A crocodile has got a long  . It can **fly** / **swim**.

2. An elephant is big, but it can run. It can **drink** / **jump** with its long .

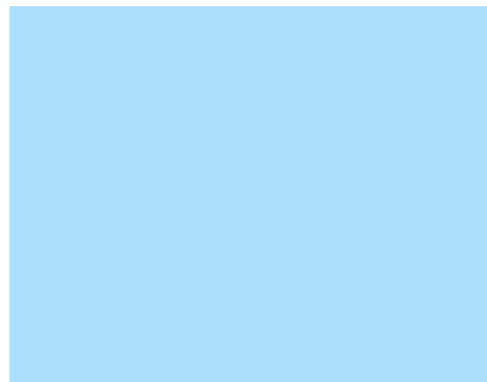
3. A gorilla can **eat** / **fly**  from a  . It has got strong legs.

3 Listen and stick.  

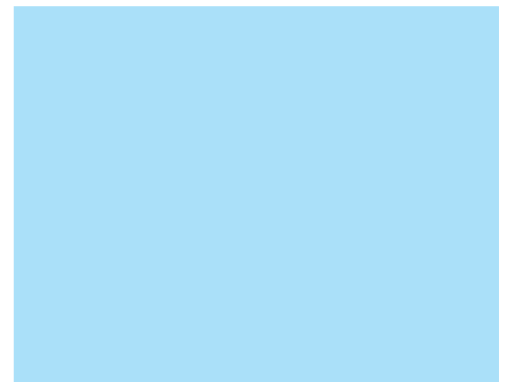
1



2



3



Questions with *can*



Can a frog climb?

Yes, it **can**.

Can a frog fly?

No, it **can't**.


4 Read and write the answer.


No, it can't. Yes, it can.

1.  Can a gorilla fly?

4.  Can a hippo swim?

2.  Can an elephant climb trees?

5.  Can a zebra run fast?

3.  Can a jaguar talk?

6.  Can a lion drink from a glass?

5 Read and match.

1. It can fly, but it can't swim.
It can eat with its beak.

It's a giraffe.

2. It can't fly, but it can climb trees.
It can jump.

It's a toucan.

3. It can't drink from a glass,
but it can swim. It can't talk.

It's a crocodile.

4. It can run, but it can't fly.
It can't eat using a fork.

It's a frog.

1 Read, draw and circle.

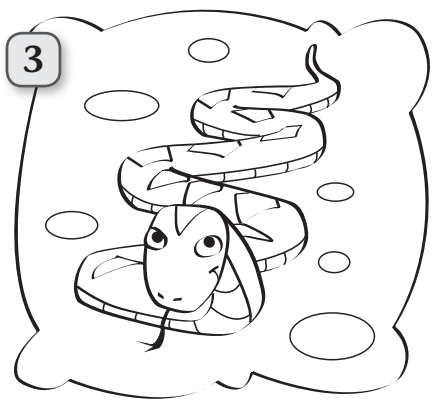
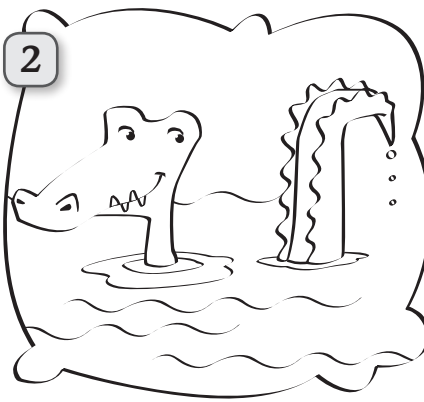
1

This is a giraffe.
It **can** / **can't** run fast.
It **can** / **can't** fly.

2

This is a snake.
It **can** / **can't** sleep in the grass.
It **can** / **can't** jump.

2 Read and cross out (X) the mistakes.



A monkey can climb trees.
It can't fly.
It ~~can't~~ eat leaves.

A crocodile can't fly.
It can't jump.
It can climb trees.

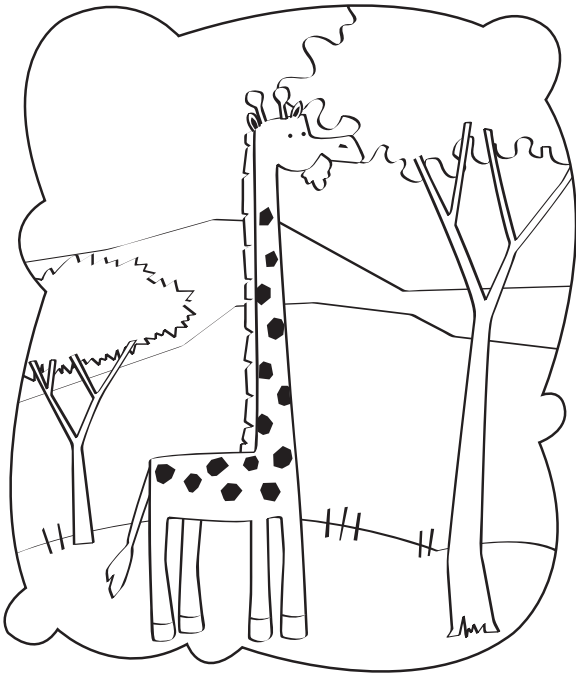
A snake can talk.
It can't run.
It can't eat leaves.

◆ Write the correct sentences.

It can eat leaves.

3 Look and complete.

big eat ears giraffe neck legs swim



This is a _____.

It is _____.

It has got four _____ and a long _____.

It has got small _____.

It can _____ leaves.

It can't _____.

4 Listen, read and match.  

I can, too!

A zebra can run.

I can, too.

I can run like the animals do!

A hippo can swim.

I can, too.

I can swim like the animals do!

A monkey can climb.

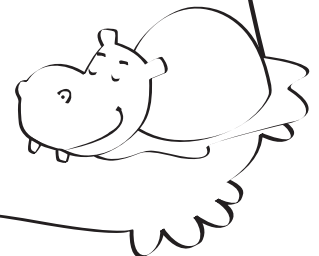
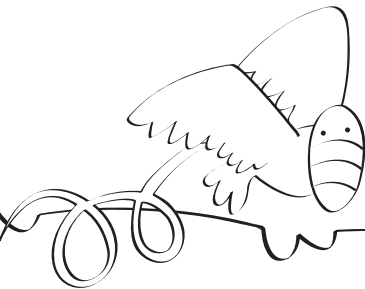
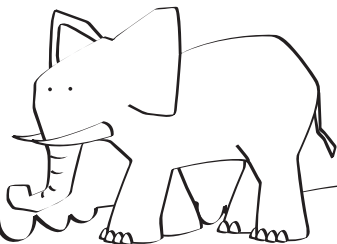
I can, too.

I can climb like the animals do!

A toucan can fly.

No, I can't.

I can't fly like the animals do!



A monkey can (climb). I can, too.



Listening



1 Listen and number. 

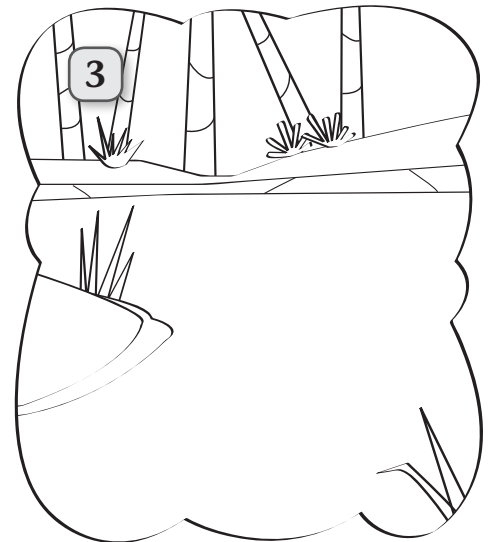
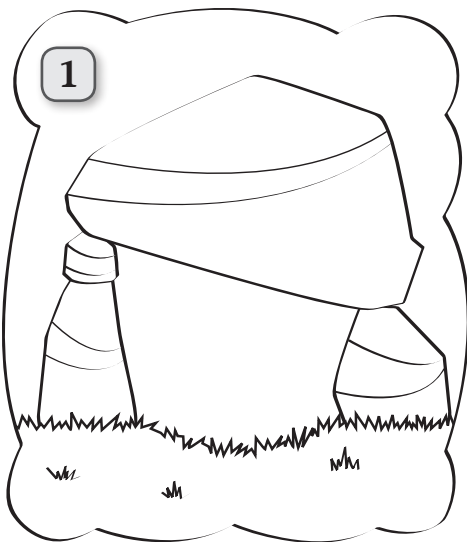


◆ Look and complete.

1. It's a _____.
2. It's a _____.
3. It's a _____.

4. It's a _____.
5. It's a _____.

2 Listen and draw. 

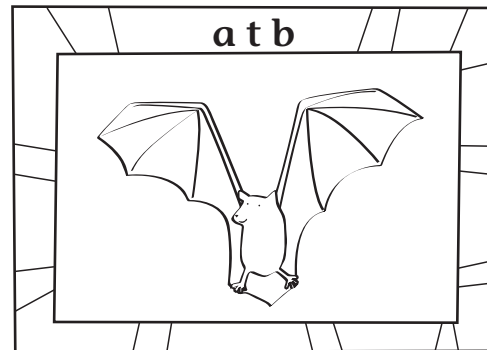
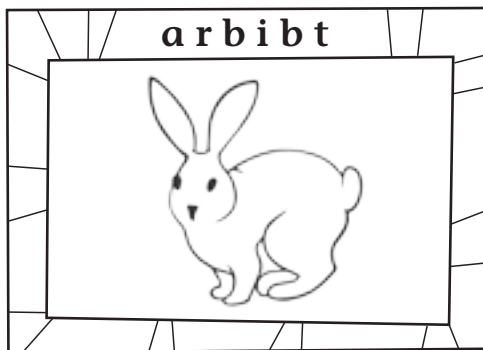
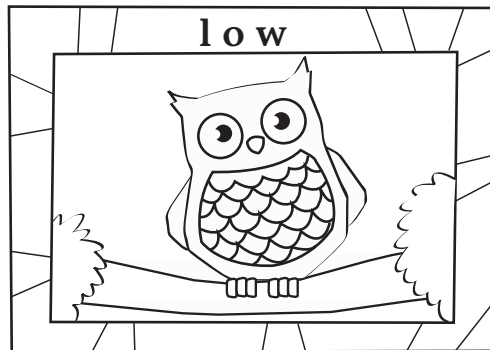




Reading



1 Unscramble and label.



◆ Colour the frames.

red = can see well at night

blue = can't see well at night

2 Read and complete.

bat	rabbit	owl
-----	--------	-----

- The _____ is a bird. It's got feathers and big eyes. It can fly very well. It can see in the dark.
- The _____ has got wings too and it can fly very well. It can't see well, but it can hear. It can use its ears to listen and find food.
- The _____ has got fur and it's got four legs. It's got big ears and it can hear very well. It can't see very well in the dark.

◆ Read and circle Yes or No.

- | | | |
|---------------------------------------|-----|----|
| 1. Can all animals see in the dark? | Yes | No |
| 2. Can a bat hear very well? | Yes | No |
| 3. Can a rabbit see well in the dark? | Yes | No |
| 4. Can a bat see well in the dark? | Yes | No |
| 5. Can a rabbit hear very well? | Yes | No |



It can/can't see in the dark.



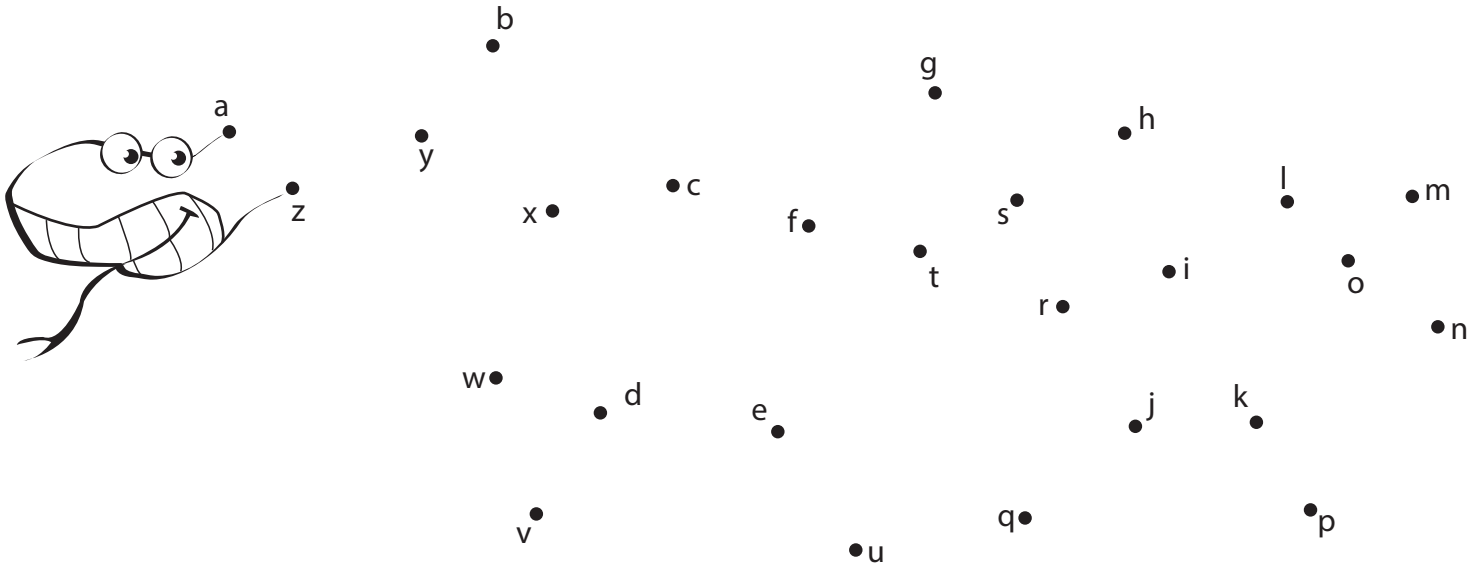


Writing

ABC



1 Connect the letters in alphabetical order. Then colour the picture.



2 Write the words in alphabetical order.

1



toucan



giraffe



crocodile

2



hippo



bird



frog

3



jaguar



zebra



monkey

My words



- ◆ Circle the favourite words for you in blue and match.
- ◆ Circle the difficult words for you in red and match.



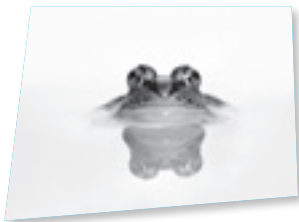
elephant

giraffe



owl

jaguar



lion

frog



bat

monkey



hippo

toucan

gorilla

zebra

