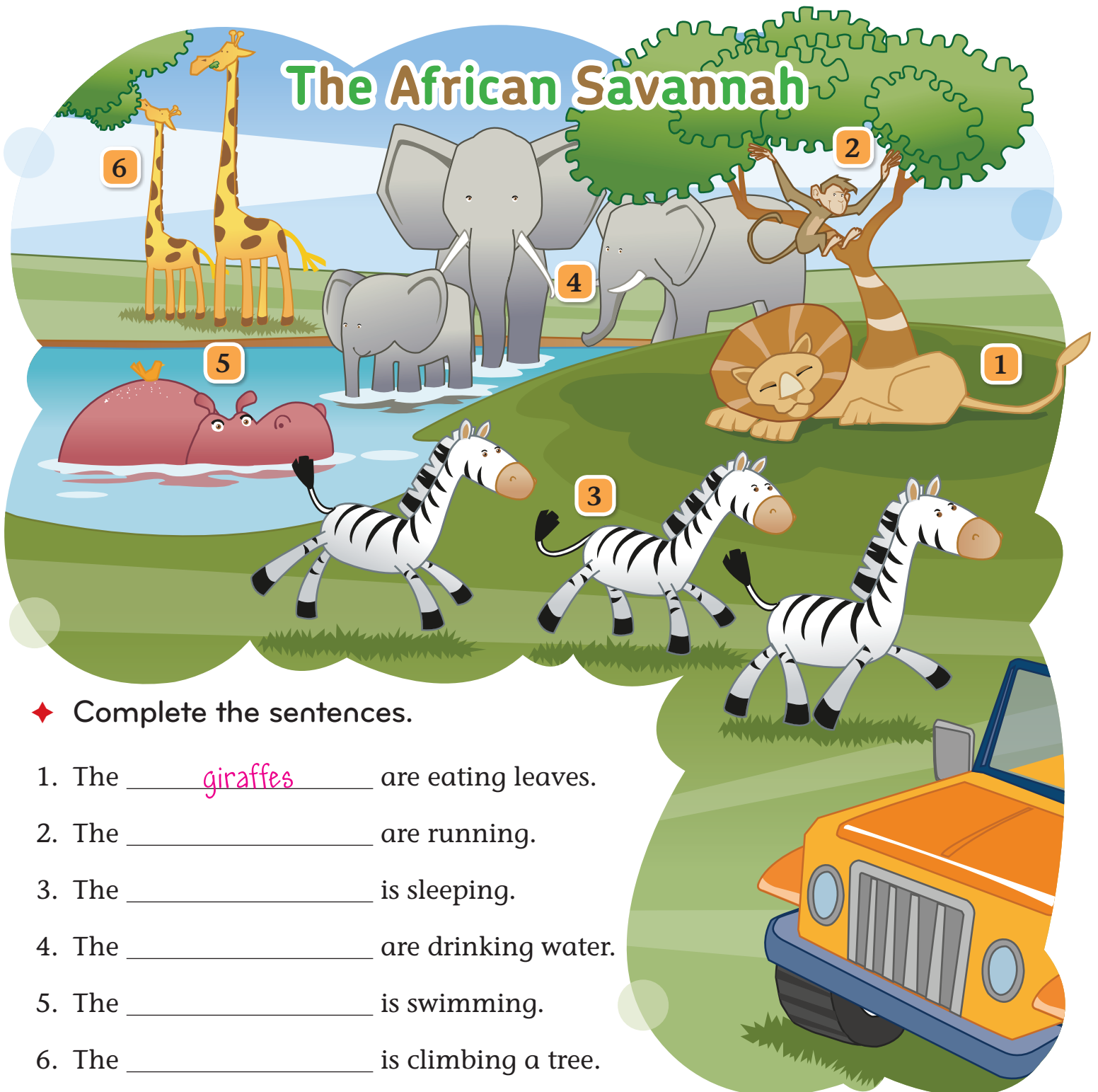


SKYROCKET 2

Contents	2
① The Animal Kingdom	4
② We All Like This	14
③ In My Town	24
Review Units 1, 2 and 3	34
Review Story Parts 1 and 2	36
④ Everyday Activities	38
⑤ Our Belongings	48
⑥ The Four Seasons	58
Review Units 4, 5 and 6	68
Review Story Parts 3 and 4	70
⑦ On Holiday	72
⑧ Community Workers	82
⑨ Having Fun	92
Review Units 7, 8 and 9	102
Review Story Parts 5 and 6	104
Picture Dictionary	106
Stickers	113

1 Listen and number the words. 1.1

___ giraffes 1 lion ___ hippo ___ monkey ___ zebras ___ elephants

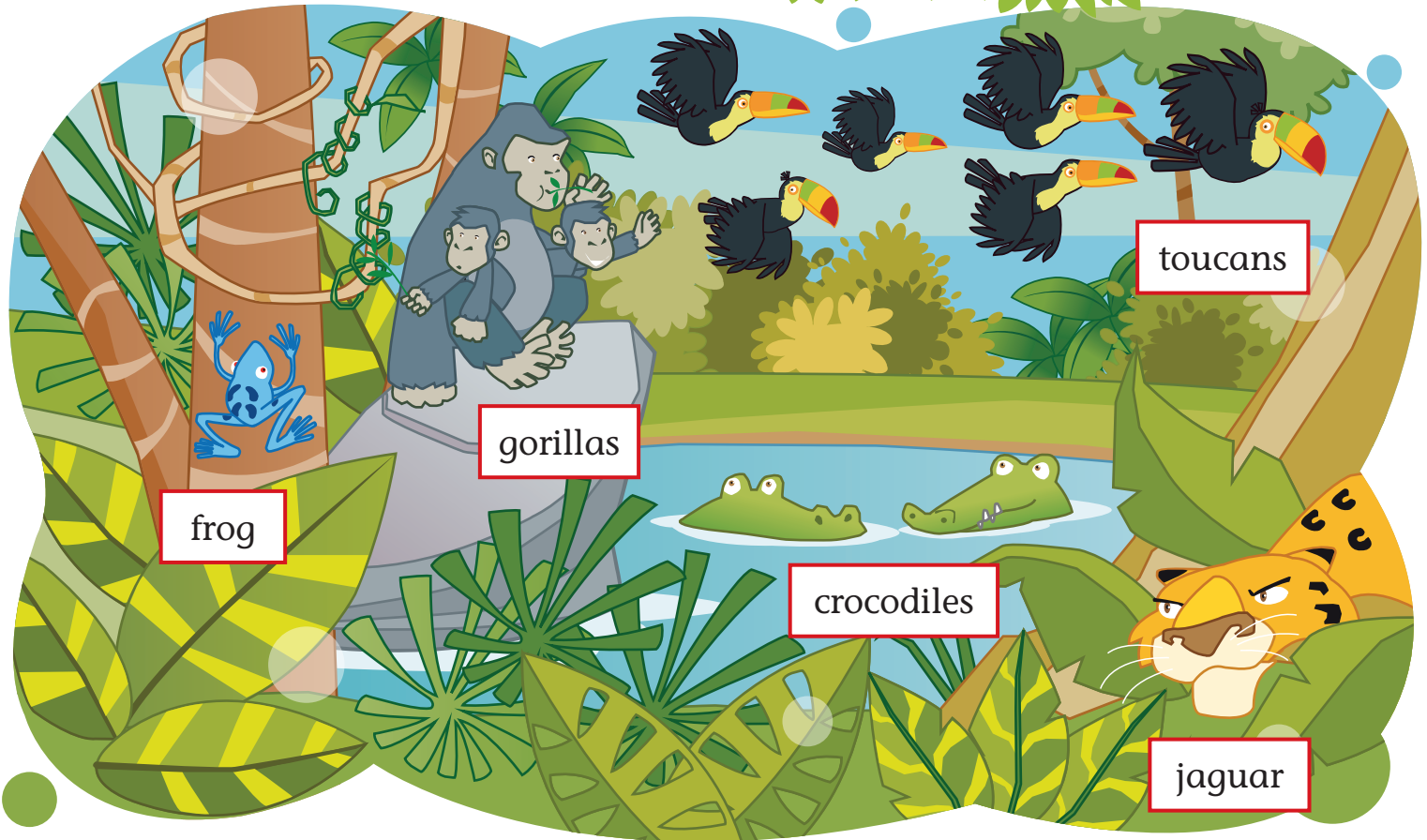


◆ Complete the sentences.

1. The giraffes are eating leaves.
2. The _____ are running.
3. The _____ is sleeping.
4. The _____ are drinking water.
5. The _____ is swimming.
6. The _____ is climbing a tree.

2 Listen and point. 1.2

The Rainforest



◆ Ask and answer.



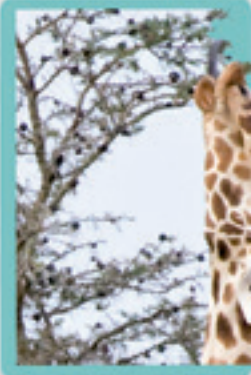
3 Describe the animals.

A lion is brown. It has got four legs and a tail.
 A toucan is black. Its beak is orange, red and green.



1 Listen and follow. Then answer the questions. 1.3

Animal Facts



1

A giraffe has got a long neck. It can eat leaves in tall trees.



2

An elephant has got a long trunk. It can drink water with its trunk.



3

A toucan has got a big beak, but it can fly very well.

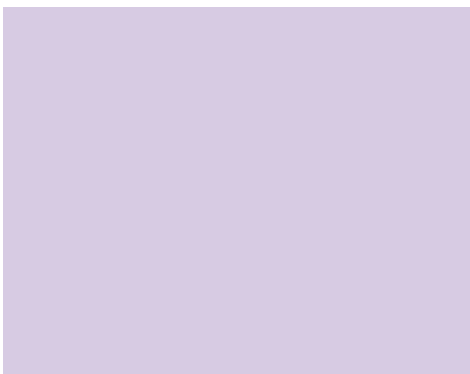


4

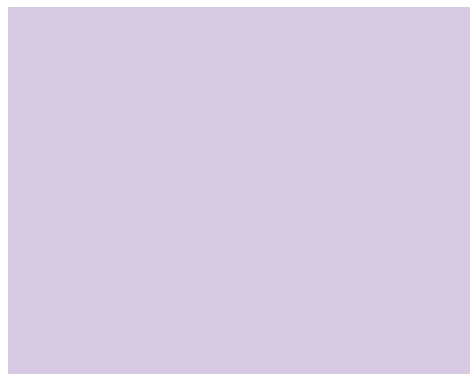
A monkey has got a long tail. It can climb trees.

1. Which animal can climb trees? _____
2. Which animal can drink with its trunk? _____
3. Which animal can eat leaves from tall trees? _____
4. Which animal can fly very well? _____

2 Read and stick.



A hippo is big, but it can swim.



A frog has got strong legs. It can jump.



3 Read and mark (✓ or ✗) the animals.

✓ = Yes, it can. ✗ = No, it can't.

Can this animal fly?



4 Game: Can or Can't.



jump?



fly?



talk?



drink from a glass?



swim?



eat using a fork?

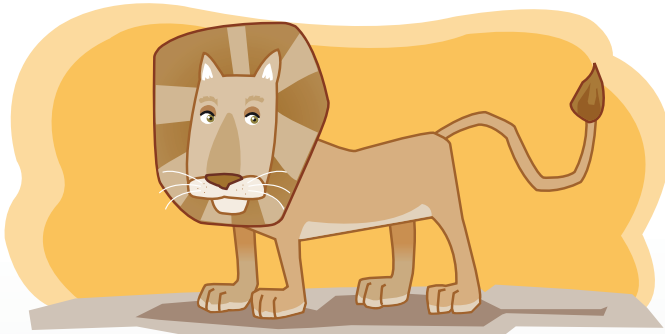


climb trees?

A lion can run. It can't fly.



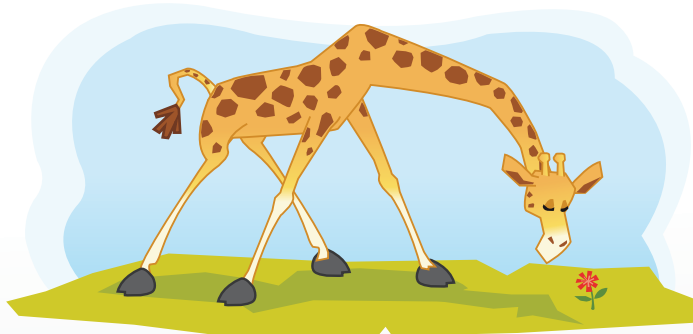
1 Look and correct the mistakes.



This is a lion.

A lion ~~can~~ fly. can't

It can't walk. _____



This is a giraffe.

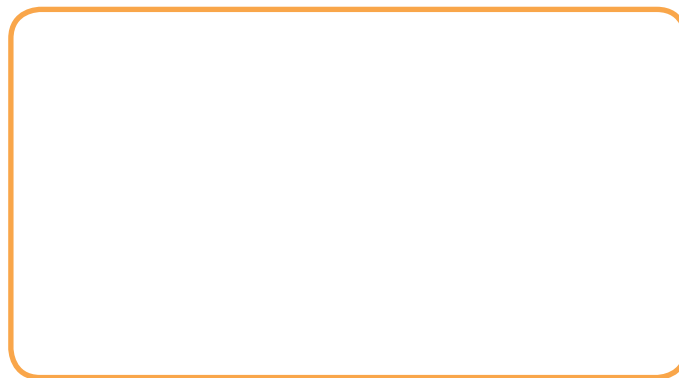
A giraffe can jump. _____

It can't run. _____

◆ Draw your favourite animals from the unit.



This is a _____. A _____
can _____. It can't _____.



This is a _____. A _____
can _____. It can't _____.

◆ Test your partner.

Can a frog swim?

Yes, it can.



2 Craft: Make an animal poster and present it to the class.

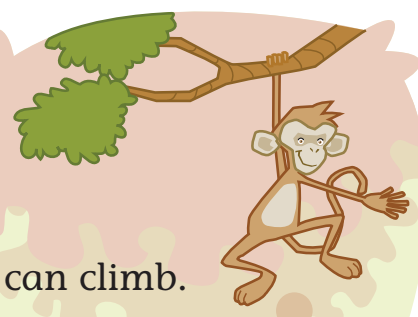
This is an elephant.

An elephant is big and grey.
It has got large ears and a long tail.
It has got tusks and a trunk.
It can drink water with its trunk.
It can't jump.

3 Listen and point to the animals. 1.4



I can, too!



A zebra can run.
I can, too.
I can run like the animals do!

A monkey can climb.
I can, too.
I can climb like the animals do!

A hippo can swim.
I can, too.
I can swim like the animals do!

A toucan can fly.
No, I can't.
I can't fly like the animals do!



◆ Listen again, chant and imitate the animals.

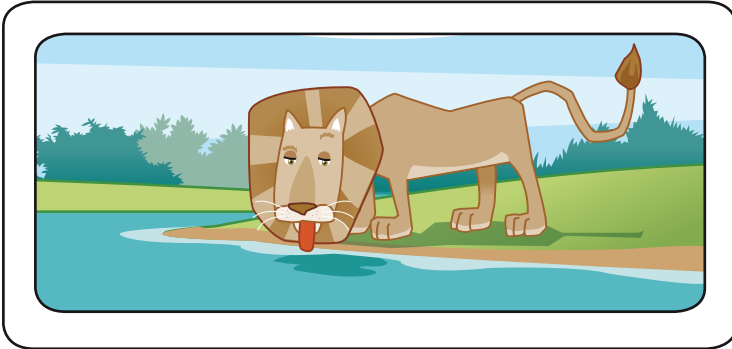
A monkey can (climb). I can, too.



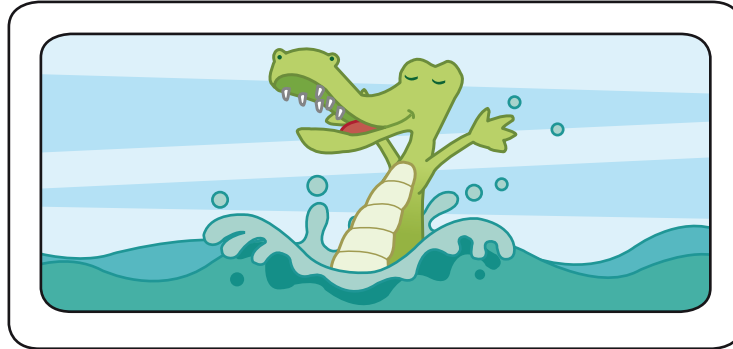
Listening



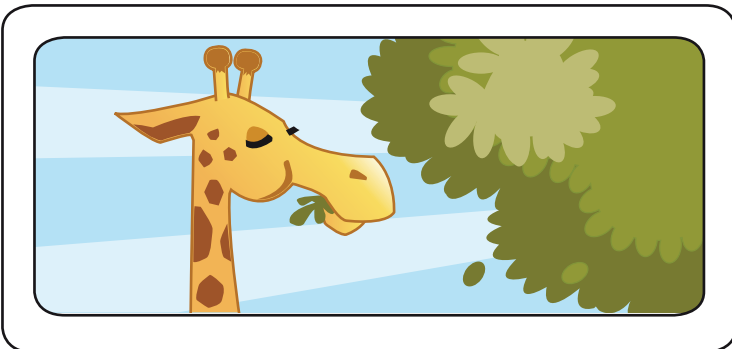
1 Listen and colour the frame. 1.5



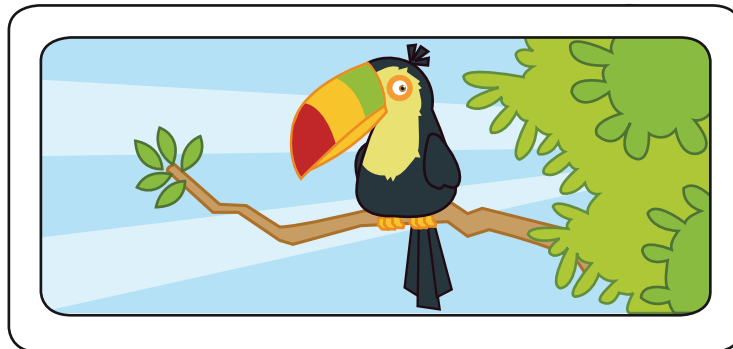
What is it? _____



What is it? _____



What is it? _____



What is it? _____

◆ Answer the questions.

2 Listen and stick. 1.6

Where are the animals?



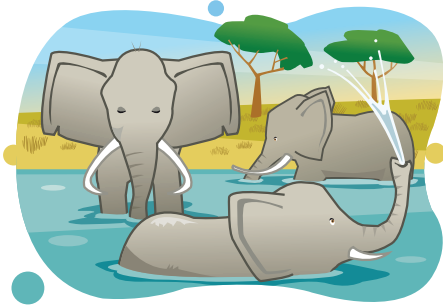


Reading



1 Read and answer the question.

Some animals are active during the day.



Other animals are active at night.



Are you active during the day or at night? _____

2 Listen and follow. 1.7



owl

An owl is a bird with big eyes. It can see very well in the dark.



rabbit

A rabbit can't see very well in the dark, but it has got long ears and can hear very well.



bat

A bat can't see in the dark, but it has got a sensor to locate food.

◆ Read and circle *True* or *False*.

- | | | |
|--|------|-------|
| 1. Owls, rabbits and bats can see in the dark. | True | False |
| 2. An owl has got big eyes. | True | False |
| 3. A rabbit can smell very well. | True | False |
| 4. A bat can't see in the dark. | True | False |





Writing

ABC



1 Write the missing letters.

A a / B b / ___ / D d / E e / F f / ___ / H h / ___ / J j / K k / L l / M m /
___ / O o / P p / ___ / R r / S s / T t / U u / ___ / W w / ___ / Y y / Z z

2 Write the names of the animals in alphabetical order.

lion gorilla elephant giraffe crocodile zebra frog
monkey jaguar hippo toucan owl bird



1. _____



8. _____



2. _____



9. _____



3. _____



10. _____



4. _____



11. _____



5. _____



12. _____



6. _____



13. _____



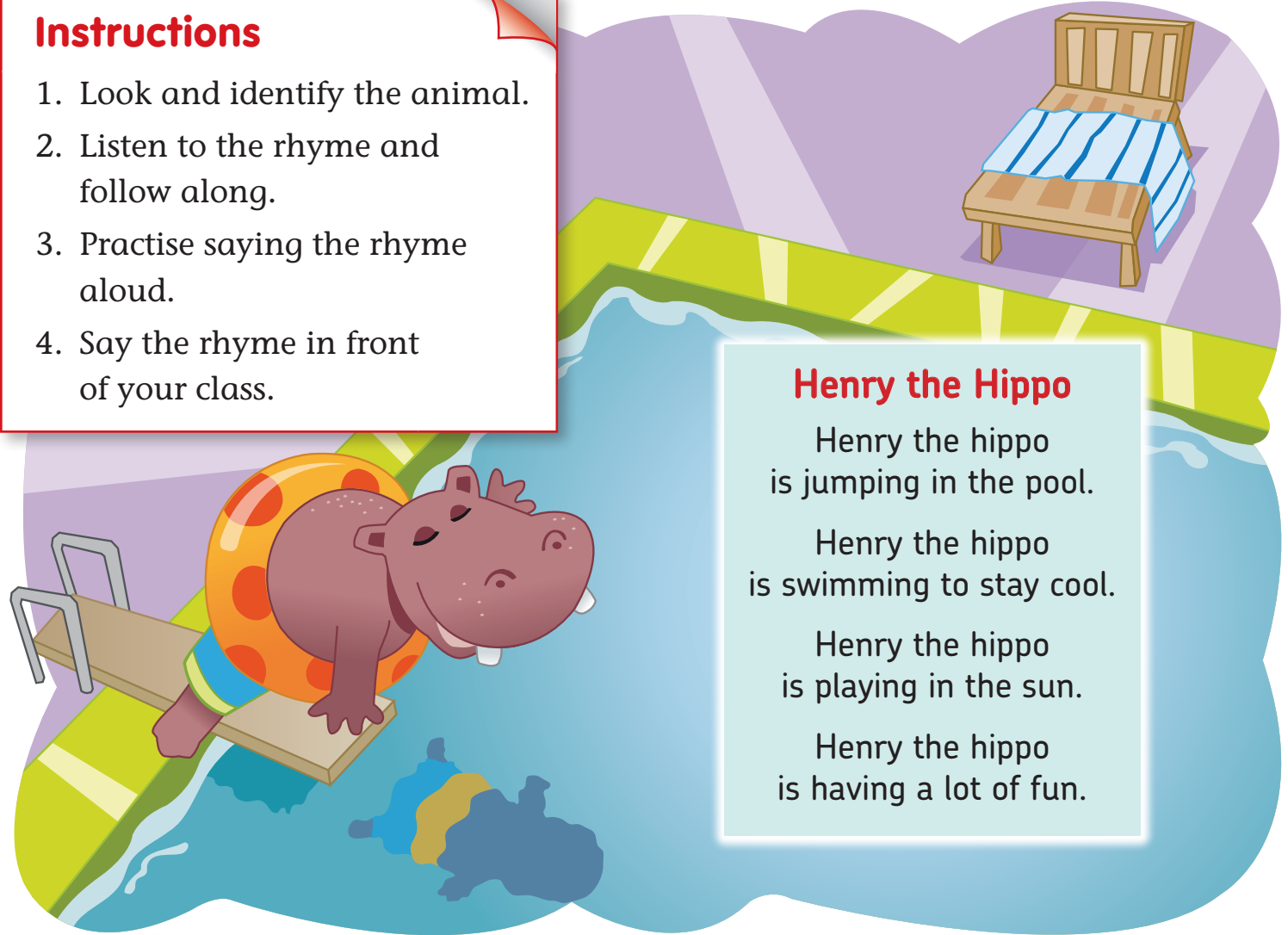
7. _____



1 Learn a rhyme.

Instructions

1. Look and identify the animal.
2. Listen to the rhyme and follow along.
3. Practise saying the rhyme aloud.
4. Say the rhyme in front of your class.



Henry the Hippo

Henry the hippo
is jumping in the pool.

Henry the hippo
is swimming to stay cool.

Henry the hippo
is playing in the sun.

Henry the hippo
is having a lot of fun.

Think Back



I can name different wild animals. 

I can say what animals can and can't do. 

I like reading and writing about animals. 

I like learning rhymes. 



Review



1 Look and circle.

1



A monkey **can** / **can't** climb tall trees.

2



An elephant **can** / **can't** swim.

3



A toucan **can** / **can't** crawl.

4



Can a zebra fly?
Yes, it **can**. / No, it **can't**.

5



Can a frog jump?
Yes, it **can**. / No, it **can't**.

6



Can a giraffe eat leaves from a tall tree?
Yes, it **can**. / No, it **can't**.

◆ Answer the questions.

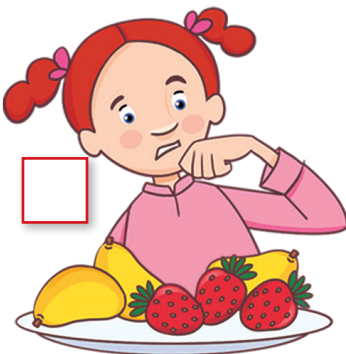
1. Which animal can fly very well? _____

2. Which small animal can use its legs to jump? _____

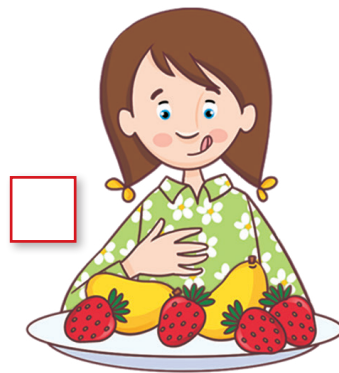
3. Which animal can drink with its long trunk? _____

2 Look and number.

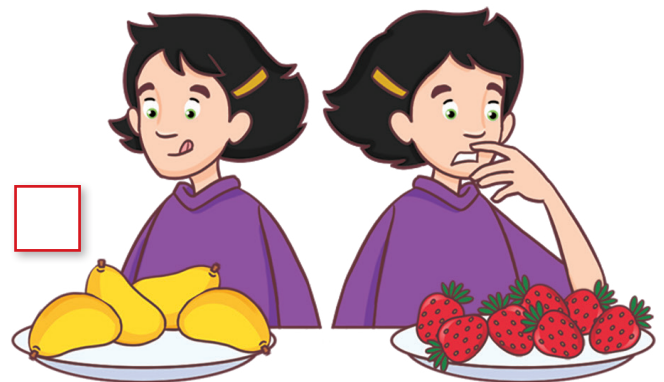
1. She likes mangoes, but she doesn't like strawberries.



2. She likes mangoes and strawberries.



3. She doesn't like mangoes or strawberries.



3 Look and ask questions. 

Do you like...?



4 Read, look and circle *True* or *False*.

- | | | |
|--|------|-------|
| 1. The cinema is behind the library. | True | False |
| 2. The bank is next to a school. | True | False |
| 3. A school is between the toy shop and a supermarket. | True | False |
| 4. The museum is opposite the bank. | True | False |



◆ Complete the sentences.

is are

- | | |
|-----------------------------|----------------------------------|
| 1. There _____ two schools. | 2. There _____ two supermarkets. |
| 3. There _____ a library. | 4. There _____ a museum. |

Do you like (tomatoes)? There is a (bank). There are (two parks).



Review Story

Before Reading

Match the words with the animals.

a giraffe

a zebra

a lion



Lenny



Judy



Stripes

1 Listen and follow the story. 

A New Home

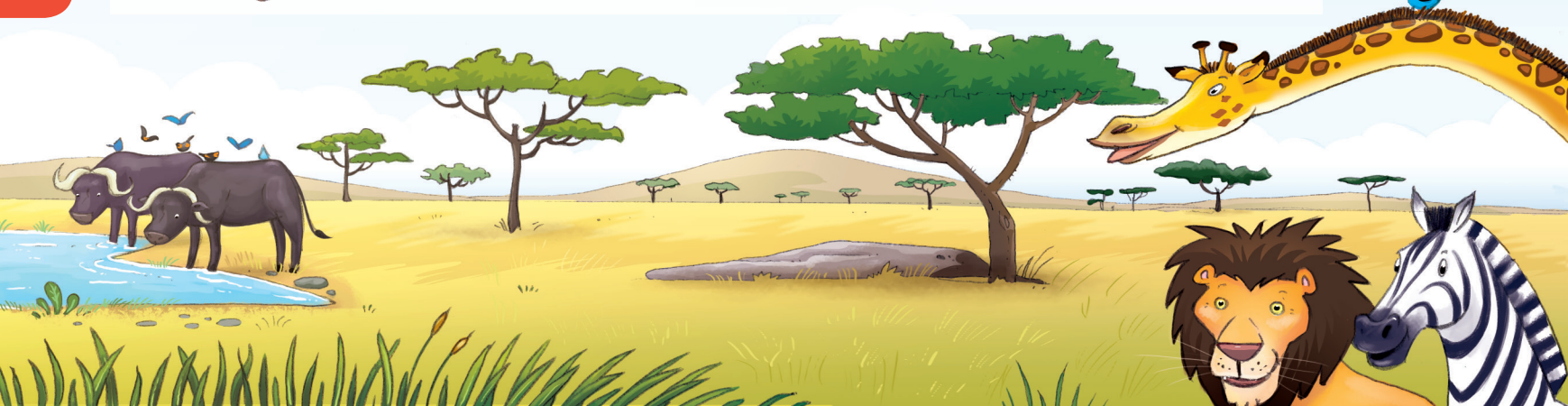


1



Judy, Stripes and Lenny are friends. They live near a water hole on the savannah. They have got everything they need. There is grass. There are trees. And there is a rock in the shade.

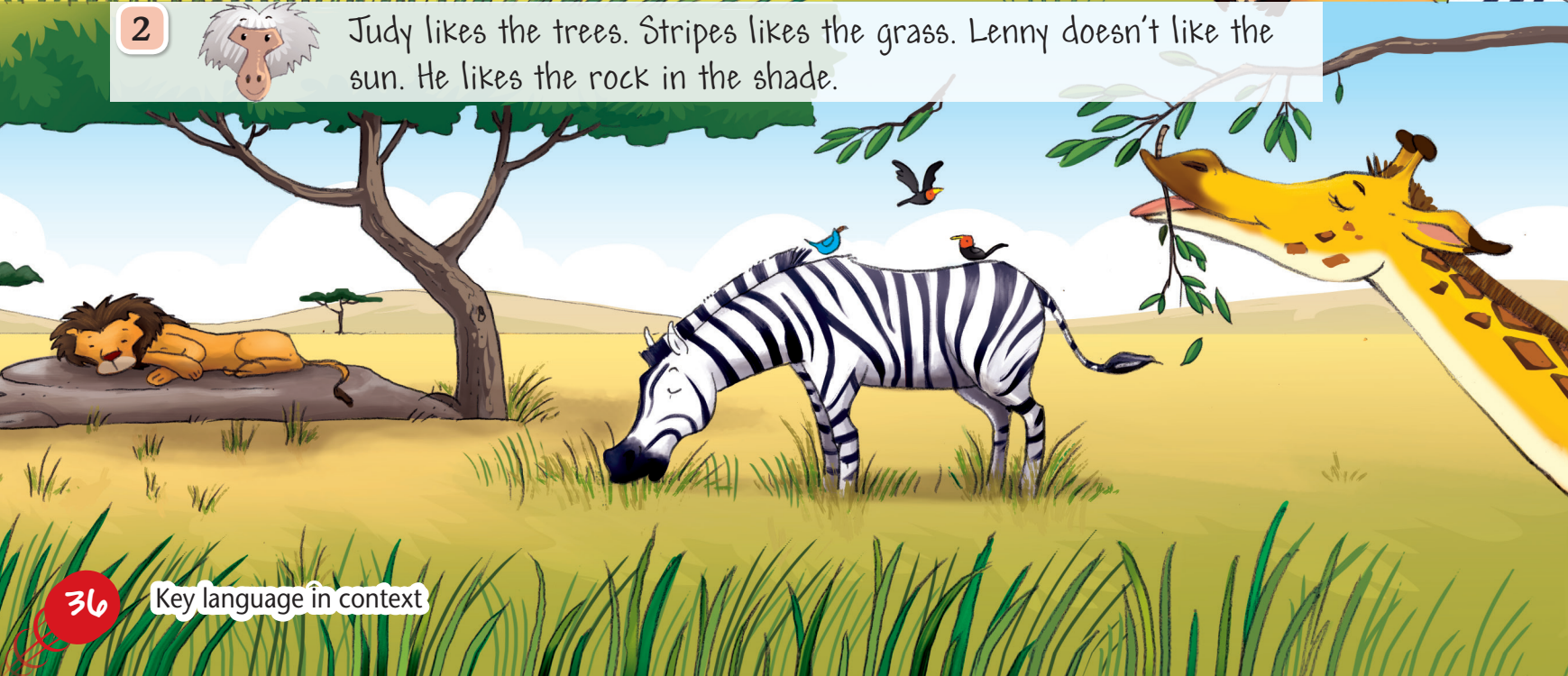
Part 1




2




Judy likes the trees. Stripes likes the grass. Lenny doesn't like the sun. He likes the rock in the shade.



2 Listen and follow the story. 1.23

3  One day a lot of people arrive. They have got tools and machines. The friends watch from the water hole. They don't like what they see. Soon the trees are gone, the grass is gone and the rock is gone. "What shall we do?" Judy asks. "We can't stay here," replies Lenny. "I know! Let's go and stay with Eddie and Ellie."

4  The three friends leave their home and follow the old path to visit Eddie and Ellie.

After Reading

Match the beginnings and endings.

Why do the animals leave their home?

1. Judy leaves because...

2. Lenny leaves because...

3. Stripes leaves because...

the grass is gone.

the trees are gone.

the rock is gone.